



SPECIAL CALLED MEETING

February 28, 2022
10:00 AM

Albany-Dougherty Government Center
222 Pine Ave, Room 100, Albany, GA 31701

AGENDA

To comply with the request set forth by the Chairman of Dougherty County, GA and the guidelines of the Center for Disease Control (CDC) regarding the Coronavirus (COVID19) pandemic and social distancing, face coverings (masks) are required for all meeting participants.

The public will also have access to the live meeting by accessing the Dougherty County Georgia Government Facebook page at facebook.com/Dougherty.ga.us or viewing the public government access channel (Channel 16).

1. Call the meeting to order by Chairman Christopher Cohilas.
2. Roll Call.
3. Purchases.
 - a. Consider for action the recommendation to accept the quote from Advanced Donald Landscaping Services in the amount of \$6,500 to complete services at the holding pond at Maple and Clark Avenues. The recommended vendor is the lowest responsible vendor meeting specifications. Three quotes were received with highest being \$20,000. Public Works Director Chuck Mathis will address. **ACTION:**
4. Additional Business.
 - a. Consider for action the recommendation to accept the Resolutions and Special Conditions documents as it relates to the County's Community Development Block Grant – Coronavirus (CDBG-CV) grant award for the Feeding the Valley "FTV" Food Bank Expansion Project. The grant requires that the documents are approved by the Dougherty County Board of Commissioners. Southwest Georgia Regional Commission Deputy Director Barbara Reddick is available to address any concerns. **ACTION:**
5. Adjourn.

Individuals with disabilities who require certain accommodations in order to allow them to observe and/or participate in this meeting, or who have questions regarding the accessibility of the meeting or the facilities are required to contact the ADA Coordinator at 229-431-2121 promptly to allow the County to make reasonable accommodations for those persons.



Scott Addison
Assistant County Administrator

**DOUGHERTY COUNTY BOARD OF COMMISSIONERS
ADMINISTRATION**

Agenda Item

Date: February 8, 2022
Meeting Date: February 14, 2022
Subject/Title: Cleaning & Tree Removal at Clark Ave & Maple St Retention Pond
Presented for: Decision
Presenter: Scott Addison

Statement of Issue

The Public Works Department is requesting the approval to have a third-party company clean debris and trash, along with tree removal, from the Clark Avenue and Maple Street Retention Pond.

History/Facts and Issues

The Dougherty County Public Works Department is requesting the approval to have a third-party company clean debris and trash, along with tree removal, from the Clark Avenue and Maple Street Retention Pond. We are requesting to utilize Advanced Donald Landscaping Services. Their quote is \$6,500. We received two other quotes from LRL Ventures & Management of \$11,100 and The Jones Agency Group of \$20,000.

Recommended Action

Recommend Dougherty County Commission approve the quote from Advanced Donald Landscaping for a total expenditure of \$6,500.

Funding Source

Scott Addison to address.



Statement of Special Conditions

GEORGIA DEPARTMENT OF COMMUNITY AFFAIRS (DCA)
COMMUNITY DEVELOPMENT BLOCK GRANT PROGRAM

STATEMENT OF SPECIAL CONDITIONS

Recipient: **Dougherty County**

Grant Number: **21cv-y-047-1-6241**

Food Banks/Food Pantries

NOTE: Prior to drawdown of funds the recipient must provide appropriate documentation to address the following special conditions and receive a Grant Adjustment Notice from DCA clearing these conditions.

- 01. Within sixty (60) days of the Community Development Block Grant (CDBG) award, and prior to funds being released, the Recipient must develop, officially adopt, and submit for DCA's approval a Language Access Plan (LAP).

The Recipient's LAP must contain the components and assurances noted in the Acknowledgement of Subrecipient Language Access Plan Requirement document; as submitted in the Recipient's CDBG application.

- 02. The Recipient must certify that they have read and agree to the following Continued Use of Facilities statement: "DCA expects facilities constructed or improved in whole or in part with CDBG funds are to be used for the approved use throughout the life of the facility. DCA should be contacted immediately if there is a proposed change in use or beneficiaries. Prior to DCA consideration of the request, the local government must hold a public hearing to afford affected citizens an opportunity to comment on the proposed change. DCA will determine if in fact the new use is an eligible and appropriate activity. DCA will generally require and the Recipient agrees to the repayment of grant funds to the State if the facility is converted to an ineligible use as determined by DCA. The repayment will be based on 10-year straight-line depreciation, except 100% repayment of grant funds will be required to be repaid during the first 5 years after the grant closeout date. Local governments that violate the agreement and fail to respond to a DCA finding with regard to an inappropriate change of use of a facility will be sanctioned and face penalties up to and including loss of their CDBG eligibility. Such uses include any leases or subleases of the facility."

- 03. Prior to final design, the Recipient must submit a detailed space analysis/floor plan for the facility, prepared by the Architect and approved by all service agencies, for DCA approval.

Certification

I certify that I am authorized by Dougherty County to accept these conditions:

Christopher S. Coihlas

Chief Elected Official

Christopher S. Coihlas, Chairman

Type or Print - Name and Title



Jawahn E. Ware

Attest:

Jawahn Ware, County Clerk

Type or Print - Name and Title

**Public Hearing Scheduled
For
February 28, 2022**

PUBLIC HEARING NOTICE
COMMUNITY DEVELOPMENT BLOCK GRANT-CORNAVIRUS (CDBG-CV) PROGRAM
DOUGHERTY COUNTY BOARD OF COMMISSIONERS

Dougherty County Board of Commissioners will hold a **PUBLIC HEARING** on **Monday, February 28, 2022, at 10:30 A.M. at the Albany/Dougherty County Governmental Building located at 222 Pine Avenue, Room 120, Albany, GA 31701** for the purpose of discussing the activities of the County's Community Development Block Grant-Coronavirus (CDBG-CV) Program. On December 22, 2021, the Dougherty County Board of Commissioners was awarded a grant in the amount of \$3,685,864.00 that will be used to expand the Feeding the Valley (FTV) Food Bank Building located on 1706 Ledo Road Albany, GA. The proposed project will serve 35,822 low to moderate income persons and will benefit a total of 35,822 residents in Dougherty, Calhoun, Lee, and Terrell counties. Items to be discussed at the hearing include:

- The amount of funds received and a description of the activities
- The amount of funds available for each activity and the amount of funds that will benefit low- and moderate-income persons
- The plan, if applicable to minimize or prevent displacement of persons and the plan to assist persons who may be displaced, if applicable
- Fair Housing Laws and the County's plan to further Fair Housing, if applicable

Solicit comments from owners of potentially Historic Properties, if applicable

The public is invited to attend this hearing to become informed of the project activities. Persons with special needs relating to disability access may use the Georgia Relay Service for the hearing impaired at 1-800-255-0056 or contact Mr. Michael McCoy, County Manager, prior February 28, 2022, the date of the hearing and Mr. McCoy can be located at 222 Pine Avenue, Suite 540, Albany, Georgia 31701 or call (229) 431-2121 between the hours of 8:00 AM to 5:00 PM, Monday thru Friday, except holidays. Persons with hearing disabilities can contact us at our TDD number (AC + number). [Applications who do not have a TDD phone may consider using the Georgia Relay Service, at (TDD) 1-800-255-0056 or (Voice) 1-800- 255-0135.]



AVISO DE AUDIENCIA PÚBLICA
PROGRAMA DE SUBVENCIÓN EN BLOQUE DE DESARROLLO COMUNITARIO-CORNAVIRUS
(CDBG-CV)
JUNTA DE COMISIONADOS DEL CONDADO DE
DOUGHERTY

La Junta de Comisionados del Condado de Dougherty llevará a cabo una **AUDIENCIA PÚBLICA el lunes 28 de febrero de 2022 a las 10:30 a.m. en la Sala de Conferencias de la Junta de Comisionados del Condado de Dougherty ubicada en 222 Pine Avenue, Sala 120, Albany, GA 31701** con el propósito de discutir las actividades del Programa de Subvención en Bloque de Desarrollo Comunitario-Coronavirus (CDBG-CV) del Condado. El 22 de diciembre de 2021, la Junta de Comisionados del Condado de Dougherty recibió una subvención por un monto de \$ 3,685,864.00 que se utilizará para expandir el Edificio del Banco de Alimentos Feeding the Valley (FTV) ubicado en 1706 Ledo Road Albany, GA. El proyecto propuesto servirá a 35,822 personas de ingresos bajos a moderados y beneficiará a un total de 35,822 residentes en los condados de Dougherty, Calhoun, Lee y Terrell. Los temas que se discutirán en la audiencia incluyen:

1. El monto de los fondos recibidos y una descripción de las actividades
2. La cantidad de fondos disponibles para cada actividad y la cantidad de fondos que beneficiarán a las personas de ingresos bajos y moderados
3. El plan, si procede para reducir al mínimo o prevenir el desplazamiento de personas y el plan para ayudar a las personas que puedan ser desplazadas, si procede.
4. Leyes de Vivienda Justa y el plan de County para promover la Vivienda Justa, si corresponde

Solicitar comentarios de los propietarios de propiedades potencialmente históricas, si corresponde.

Se invita al público a asistir a esta audiencia para informarse de las actividades del proyecto. Las personas con necesidades especiales relacionadas con el acceso para discapacitados pueden usar el Servicio de Retransmisión de Georgia para personas con discapacidad auditiva al 1-800-255-0056 o comunicarse con el Sr. Michael McCoy, Gerente del Condado, antes del 28 de febrero de 2022, la fecha de la audiencia y el Sr. McCoy puede ubicarse en 222 Pine Avenue, Suite 540, Albany, Georgia 31701 o llamar al (229) 431-2121 entre las 8:00 AM y las 5:00 PM, de lunes a viernes, excepto festivos. Las personas con discapacidad auditiva pueden contactarnos a nuestro número TDD (número AC +). [Las aplicaciones que no tienen un teléfono TDD pueden considerar usar el Servicio de Retransmisión de Georgia, al (TDD) 1-800-255-0056 o (Voz) 1-800- 255-0135.]



Equal Housing Opportunity

Special Condition #1
Language Access Plan (LAP) Resolution
&
Language Access Plan

**RESOLUTION
DOUGHERTY COUNTY BOARD OF COMMISSIONERS
ADOPTION OF LANGUAGE ACCESS PLAN (LAP)
FOR COMMUNITY DEVELOPMENT BLOCK GRANT CORONAVIRUS (CDBG-CV)**

WHEREAS, the Dougherty County Board of Commissioners have been awarded a Community Development Block Grant Coronavirus (CDBG-CV) grant number 21cv-y-047-6241 from the State of Georgia Department of Community Affairs (DCA) Office of Community and Development; and

WHEREAS, the Dougherty County Board of Commissioners CDBG-CV grant is partnering with Feeding the Valley Food Bank (FTV) to expand the food bank located on 1706 Ledo Road Albany, GA 31707. These grant funds will benefit low- and moderate- income residents in Dougherty and surrounding counties served by Feeding the Valley Food Bank to address food shortage and food insecurities during the COVID-19 pandemic.

THEREFORE, BE IT FURTHER RESOLVED, that the Dougherty County Board of Commissioners' Chairman and County Commission Members have adopted a Language Access Plan (LAP) pursuant to the requirement of Title VI of the Civil Rights Act of 1964 and Executive Order (EO) 13166, it will take timely and reasonable steps to provide Limited English Proficient (LEP) persons with Meaningful Access to programs and activities funded by the federal government and awarded by DCA. Access to this program and services will not be impeded because of an individual's inability to speak, read, write, or understand English.

THEREFORE, BE IT FURTHER RESOLVED, by the Chairman and County Commission members adoption of the Language Access Plan (LAP) will be used to provide language assistance with the respect to ensure persons with Limited English Proficiency (LEP) gain meaning access to the Dougherty County Board of Commissioners services, programs, and services.

Adopted this _____ day of _____ 2022.

Christopher S. Cohilas, Chairman
Dougherty County Board of Commissioners

ATTEST:

Jawahn E. Ware, County Clerk
Dougherty County Board of Commissioners

Dougherty County Board of Commissioners

Language Access Plan (LAP)

Community Development
Block Grant Coronavirus
(CDBG-CV) Program

CDBG-CV Project No: 21cv-y-047-6241

**Feeding the Valley (FTV)
Food Bank Building Expansion
Project**



Southwest Georgia
Regional Commission

Georgia Department of
Community Affairs

Table of Contents

I. General Information..... Page 3

II. Meaningful Access: Four Factor Analysis Page 5

III. Language Assistance.....Page 7

IV. Staff Training.....Page 8

V. Translation of Documents..... Page 8

VI. Monitoring and Updating the LAP Plan.....Page 9

VII. Dissemination of the Dougherty County LAP Plan..... Page 9

VIII. Records..... Page 9

IX. Complaints/Findings.....Page 10

X. Available Federal LEP Resources.....Page 10

APPENDICES

- 1) "I Speak" Cards/ Poster
- 2) Georgia Department of Community Affairs (DCA) 2021 Estimates & American Community Survey (ACS) 2019.S1601 Estimates
- 3) LAP and Target Area Maps

Dougherty County Board of Commissioners

LANGUAGE ACCESS PLAN (LAP)

I. GENERAL INFORMATION

Prepared By: Brenda Wade, Grant Administration Manager
 Southwest Georgia Regional Commission
 181 East Broad Street
 Camilla, GA 31730
 (229) 522-3552 Ext. 105
bwade@swgrc.org

List of Current Applicable Funded Grants/Programs (to be automatically amended as projects are funded):

1. Grantee: Dougherty County Board of Commissioners, Albany, GA
 Community Development Block Grant Coronavirus (CDBG-CV) Program
 CDBG-CV Fiscal Year 2021 Grant Number: 21cv-y-047-1-6241
 Food Bank Expansion Project

The mission of Dougherty County Board of Commissioners is to impact our community by addressing food shortages and food insecurities that families faced during the COVID-19 pandemic and that continue today. Dougherty County Board of Commissioners is partnering with Feeding the Valley (FTV) Food Bank to utilize CDBG-CV funds to benefit low and moderate-income residents within its service area. In April of 2019, the food bank serving Calhoun, Dougherty, Lee, and Terrell counties asked to be released from this responsibility. Feeding the Valley Food Bank acquired the contract to serve those counties and began doing so in July 2019. Feeding the Valley (FTV) Food Bank will relocate from its current site on 301 South Slappey Blvd., Albany, Georgia to the new site located at 1706 Ledo Road Albany, Georgia that meets the community's current needs and addresses the challenges faced at the current location. Dougherty County Board of Commissioners has hired the Southwest Georgia Regional Commission (SWGRC) to administer Dougherty County Board of Commissioners CDBG-CV project.

This *Language Access Plan* has been prepared to address Dougherty County Board of Commissioners responsibilities as a recipient of federal financial assistance from Georgia Department of Community Affairs (DCA) programs & grants funded by HUD as they relate to the needs of individuals with limited English language skills. The plan has been prepared to ensure compliance with HUD's guidance and Title VI of the Civil Rights Act of 1964, and its implementing regulations. Under HUD's guidance, Dougherty County Board of Commissioners must take reasonable steps to ensure meaningful access to their programs and activities by persons with Limited English Proficiency (LEP).

Executive Order 13166, titled *Improving Access to Services for Persons with Limited English Proficiency*, indicates that differing treatment based upon a person’s inability to speak, read, write or understand English is a type of national origin discrimination. It directs each agency to publish guidance for its respective recipients clarifying their obligation to ensure that such discrimination does not take place. This order applies to all state and local agencies which receive federal funds, including the Dougherty County Board of Commissioners.

Dougherty County Board of Commissioners has developed this **Language Access Plan (LAP)** to help identify reasonable steps for providing language assistance to persons with Limited English Proficiency (LEP) who wish to access services provided through programs funded by the Georgia Department of Community Affairs/HUD. As defined by Executive Order 13166, LEP persons are those who do not speak English as their primary language and have limited ability to read, speak, write, or understand English. This plan outlines how to identify a person who may need language assistance, the ways in which assistance may be provided, staff training that may be required, and how to notify LEP persons that assistance is available.

To prepare this plan, Dougherty County Board of Commissioners used HUD’s four-factor LEP analysis which considers the following factors:

1. The number or proportion of LEP persons eligible to be served or likely to be encountered by the Community Improvement programs.
2. The frequency with which LEP persons encounter HUD funded programs.
3. The nature and importance of the HUD funded programs and services provided by Dougherty County Board of Commissioners to the LEP population.
4. The resources available to Dougherty County Board of Commissioners and overall cost to provide LEP assistance.

SAFE HARBORS

In accordance with HUD Safe Harbors for LEP, Dougherty County Board of Commissioners will translate written HUD related project documents for groups that are at least 5% of the population eligible (and more than 50 persons) or 1,000 persons, whichever is less. If there are fewer than 50 persons in a language group that reaches the 5% trigger, the Dougherty County Board of Commissioners will translate the vital HUD related written materials and will provide written notice in the primary language of the LEP group of the right to receive competent oral interpretation of those written materials, free of cost if needed.

The size of the language group determines the recommended provision for written language assistance.

Size of Language Group	Recommended Provision of Written Language Assistance
1,000 or more in the eligible population	Translated vital documents
More than 5% of the eligible population or beneficiaries and more than 50 in number	Translated vital documents
More than 5% of the eligible population or beneficiaries and 50 or less in number	Translated written notice of right to receive free oral interpretation of documents.
5% or less of the eligible population or beneficiaries and less than 1,000 in number	No written translation is required.

II. MEANINGFUL ACCESS: FOUR-FACTOR ANALYSIS

1. The number or proportion of LEP persons eligible to be served or likely to be encountered by the programs.

Dougherty County Board of Commissioners reviewed the Georgia Department of Community Affairs (DCA) CDBG Applicant Concentration Data for 2021 and determined that of the population of 83,729, persons over 5 years of age, 2,007 persons in Dougherty County Board of Commissioners speak Spanish a language other than English. Of those 2,007 persons, 896 (1.07% of the population speaking a language other than English) have limited English proficiency; that is, they speak English less than “very well.” **See Appendix 2 of this Plan for DCA’s Estimates. ***

Language Spoken*	# of Residents Over 5 Years of Age*	Speaks English Less Than “Very Well” *
English	83,729	896
Spanish	2,007 (1.07%)	896
Other Indo-European Languages	488 (.19%)	160
Other Asian and Pacific Island Languages	473 (.22%)	186

A review of the residents that were surveyed for FY 2021 Community Development Block Grant Coronavirus (CDBG-CV) Grant project location area revealed several low to moderate income individuals are requesting for assistance. **Therefore, this does trigger the thresholds described above for “translating vital documents or translated written notice of right to receive free oral interpretation of documents” language assistance.** Oral Interpretation Services are available for clients upon request. However, in the past, all our clients have provided their own translator with whom they are comfortable sharing personal information. The LEP Activity Log information sheet is on file with the County. Individual personal information is confidential. However, the Activity Log Sheet is available for review.

Source: *Georgia Department of Community Affairs (DCA) – CDBG Applicant Concentration 2021 - Language Spoken at Home by Ability to Speak English For The Population 5 Years and Over and American Community Survey (ACS) 2019.S1601 Estimates

2. The frequency with which LEP persons encounter HUD funded programs & services.

Dougherty County Board of Commissioners reviewed the frequency with which staff have, or could have, contact with LEP persons. This includes documenting phone inquiries or office visits, as well as public hearings and interactions during surveys. Over the past two years, the Dougherty County Board of Commissioners has had no requests for interpreters and no requests for translated program documents.

A review of the residents that were in our FY 2021 CDBG project area reveals **2,007 (1.07%) speak Spanish of the County's population are LEP persons.**

Frequency of Interaction: Annually

For Project Applications:

- a. When notifying the public about the potential grant and activities
- b. When surveying income in the target area, if applicable
- c. When determining preliminary eligibility for housing activities, if applicable

Frequency of Interaction: As required

For Project Award and Activities:

- A. When notifying the public about the grant award and ongoing activities
- B. When seeking applicants to participate in the program
- C. When working with homeowners selected for assistance
- D. When seeking qualified contractors

3. The nature and importance of programs, activities or services provided by the Community Development Department to the LEP population.

Housing plays a critical role in maintaining quality of life. Dougherty County Board of Commissioners addressing food shortages and food insecurities that families faced during the COVID-19 pandemic and that continues today. Outreach throughout the community helps to ensure an awareness of our programs. The County's population- 100% speaks English. Other than English speaking individuals, County staff are most likely to encounter Spanish speaking LEP individuals through office visits, phone conversations. Upon client request, the Dougherty County Board of Commissioners will provide oral interpreters using bi-lingual employees or qualified contract interpreters. To date, all LEP individuals have provided their own interpreter-a child or friend.

Nature of the Program(s): Dougherty County Board of Commissioners has been awarded CDBG-CV funds to expand the Food Bank facility located at 1706 Ledo Road, Albany, Georgia 31707. The expansion of the food bank facility will benefit low- and moderate- income residents and will allow the County to address food shortages and food insecurities during the COVID-19 pandemic.

Importance of the Program(s): Denial or delay of access to services or information would not have serious or life-threatening implications for the LEP individual.

4. The resources available to the Dougherty County Board of Commissioners and overall cost to provide LEP assistance.

Dougherty County Board of Commissioners reviewed its available resources that could be used for providing LEP assistance, including which of its documents would be most valuable to be translated if the need should arise. An "I Speak" card/poster will be made available to determine needed language translations. A notice (see below) will be posted in all ads for GA DCA/HUD programs regarding who to contact should language assistance be needed. Language translation, if needed, would be provided through the available bi-lingual staff and/or the Language Line (706-637-8629) for which Dougherty County Board of Commissioners would pay a fee.

III. LANGUAGE ASSISTANCE

A person who does not speak English as their primary language and who has a limited ability to read, write, speak, or understand English may be a Limited English Proficient (LEP) person and may be entitled to language assistance with respect to Planning and Development services. Language assistance can include interpretation, which means oral or spoken transfer of a message from one language into another language and/or translation, which means the written transfer of a message from one language into another language.

The Name of the individual at Dougherty County Board of Commissioners responsible for coordination of LEP Compliance is:

Mr. Michael McCoy, County Administrator
 Dougherty County Board of Commissioners
 222 Pine Avenue, Suite 540
 Albany, GA 31701
 (229) 431-2121
mmccoy@@dougherty.ga.us

How the County staff may identify an LEP person who needs language assistance:

- Post notice of LEP Plan and the availability of interpretation services free of charge in languages LEP persons would understand;
- Add statement (see below) to public meeting and event notices concerning GA DCA/HUD programs;
- All County staff will be informally surveyed periodically on their experience concerning any contacts with LEP persons during the previous year; and
- When County staff conducts a Public Hearing, an informational meeting or event, a staff person may greet participants as they arrive. By informally engaging participants in conversation, it is possible to gauge each attendee's ability to speak and understand English. Although translation may not be able to be provided at the event (unless previously requested) it will help identify the need for future events; and
- Language Identification Cards/Posters will be used as necessary to determine a client's language needs.

Language Assistance Measures-Although there are no eligible LEP households in, that is, persons who speak English “not well” or “not at all”, it will strive to offer the following measures:

1. The County will take reasonable steps to provide the opportunity for meaningful access to LEP clients who have difficulty communicating English.
2. The following resources will be available to accommodate LEP persons:
 - Interpreters for the Spanish language if available will be provided within a reasonable time period; or
 - Language interpretation will be accessed through Language Line Solutions.
3. Language Identification Cards/Posters will be used as necessary to determine a client’s language needs.
4. The following statements will be added to public meeting and event notices concerning GA DCA/HUD programs:

“Persons with special needs relating to handicapped accessibility or foreign language should contact Mr. Michael McCoy, County Administrator, Dougherty County Board of Commissioners, 222 Pine Avenue, Suite 540 Albany, GA 31701, (229) 431-2121 before any scheduled public hearing. This person can be located at the County Office located, 222 Pine Avenue, Suite 540, Albany, GA 31701, and is available between the hours of 8:30 a.m. to 5:00 p.m., Monday through Friday, except holidays. Persons with hearing disabilities may consider using the Georgia Relay Service, at (TDD) 1-800-255-0056 or (Voice) 1-800-255-0135.”

IV. STAFF TRAINING

The following training will be provided to all Planning and Community Development Department staff:

- Information on the Title VI Policy and LEP responsibilities;
- Description of language assistance services offered to the public;
- Documentation of language assistance requests; and
- How to handle a potential Title VI/LEP complaint.

All contractors, subcontractors and sub-recipients performing work for or receiving federal funds for Community Development projects will be required to follow the Title VI/LEP guidelines.

V. TRANSLATION OF DOCUMENTS

- Dougherty County Board of Commissioners weighed the cost and benefits of translating documents for potential LEP groups.

There are two (2) service sectors with which a Hispanic citizen will most likely use the County’s services.

1. Hispanic Citizens wishing to utilize County utilities system.
2. Hispanic Citizens wishing to obtain an occupational certificate (business license).

Due to the infrequency of the encounters with LEP individuals, Dougherty County Board of Commissioners written materials are English-only. Any request for the language translation of the documents will be reviewed and accommodated if the accommodation is reasonable and necessary. Considering the expense of translating the documents, the likelihood of frequent changes in documents and other relevant factors, currently no documents require translation.

Due to the relatively small eligible local LEP population, Dougherty County Board of Commissioners does not have a formal outreach procedure in place at this time. Translation resources have been identified. When and if the need arises for LEP outreach, the Dougherty County Board of Commissioners will consider the following option:

- When staff prepares a document, or schedules a meeting, for which the target audience is expected to include LEP individuals, then relevant documents, meeting notices, flyers, and agendas will be printed in an alternative language based on the known LEP population, if requested.

VI. MONITORING AND UPDATING THE LAP PLAN/TERM OF THE PLAN

Dougherty County Board of Commissioners will update the LAP Plan as required. At a minimum, the plan will be reviewed and updated every five years using American Fact Finder for census information, when a new HUD funded project is approved, or when higher concentrations of LEP individuals are present in the Dougherty County. Updates will include the following:

- The number of documented LEP person contacts encountered annually;
- How the needs of LEP persons have been addressed;
- Determination of the current LEP population in the service area;
- Determination as to whether the need for translation services has changed;
- Determine whether local language assistance programs have been effective and sufficient to meet the need;
- Determine whether the Dougherty County Board of Commissioners financial resources are sufficient to fund language assistance resources needed;
- Determine whether the Dougherty County Board of Commissioners fully complies with the goals of this LAP Plan; and
- Determine whether complaints have been received concerning the agency's failure to meet the needs of LEP individuals.

TERM OF PLAN: This plan will remain in place for five (5) years from the date of adoption including all updates and revisions over the course of the five (5) years. A new plan will be prepared and adopted every five (5) years.

VII. DISSEMINATION OF THE DOUGHERTY COUNTY BOARD OF COMMISSIONERS LAP PLAN

A link to the LAP Plan will be on Dougherty County Board of Commissioners website page and provided to anyone requesting the information.

VIII. RECORDS

Dougherty County Board of Commissioners will maintain records in the County Administrator's office regarding its efforts to comply with Title VI LEP obligations. These records will be reviewed periodically and open to the public to improve service.

IX. COMPLAINTS/FINDINGS

Any person who believes they have been denied the benefits of this LAP or that Dougherty County Board of Commissioners has not complied with Title VI of the Civil Rights Act of 1964, 42 U.S.C. 2000(d) and Executive Order 13166 regulations may file a complaint with the County LAP Coordinator. The County LAP Coordinator may be the first point of contact for any complaints or appeals, but the DCA LAP Coordinator must be informed of all complaints and appeals. The LAP Coordinator will provide oversight of the complaint/appeal resolution process. To file a complaint, submit the written complaint to:

Mr. Michael McCoy, County Administrator
 Dougherty County Board of Commissioners
 222 Pine Avenue, Suite 540
 Albany, GA 31701
 (229) 431-2121
mmcoy@dougherty.ga.us

DCA 504 Coordinator
 60 Executive Park South, N.E.
 Atlanta, Georgia 30329-2231
fairhousing@dca.ga.gov

X. AVAILABLE FEDERAL LEP RESOURCES

DCA Website – DCA Housing Deficiency & Minority Concentration 2021

<http://georgia-dca.maps.arcgis.com>

HUD's LEP Website:

<http://www.hud.gov/offices/fheo/lep.xml>

Federal LEP Website:

<http://www.lep.gov/>

LEP and Title VI Videos:

<http://www.lep.gov/video/video.html>

"I Speak" Card:

<http://www.lep.gov/ISpeakCards2004.pdf>

APPENDICES

1. **“I SPEAK CARDS”/POSTER**
2. **Georgia Department of Community Affairs – (DCA)
CDBG Applicant Concentration 2021 Data – County
*Language Spoken at Home By Ability to Speak English for the Population 5
years and over* and American Community Survey (ACS) 2019.S1601
Estimates**
3. **LAP Data and Target Area Maps & LEP Activity
Log Sheet**

APPENDIX 1

“I SPEAK CARDS” I SPEAK POSTER

“I SPEAK” CARDS



1 speak Spanish.
I cannot communicate well in English. Please provide me with a qualified interpreter."

By law, the institutions that receive federal funds (i.e. Medicaid, Medicare, Food Stamps) must provide the services of a qualified interpreter to patients/clients who are not fluent in English. This law is meant to provide all people with equal access to public services (i.e. at hospitals and doctors' offices, schools, and government entities). The interpreter's services must be provided at no cost to the patient/client. We recommend that you note the person's spoken language in his/her file.

To learn more about language assistance, or the law, please call:

Culture Connect, Inc.
(404) 627-4793 culture connect
Office of Civil Rights (OCR)
(404) 562-7886



1 speak Spanish.
I cannot communicate well in English. Please provide me with a qualified interpreter."

By law, the institutions that receive federal funds (i.e. Medicaid, Medicare, Food Stamps) must provide the services of a qualified interpreter to patients/clients who are not fluent in English. This law is meant to provide all people with equal access to public services (i.e. at hospitals and doctors' offices, schools, and government entities). The interpreter's services must be provided at no cost to the patient/client. We recommend that you note the person's spoken language in his/her file.

To learn more about language assistance, or the law, please call:

Culture Connect, Inc.
(404) 627-4793 culture connect
Office of Civil Rights (OCR)
(404) 562-7886



1 speak Spanish.
I cannot communicate well in English. Please provide me with a qualified interpreter."

By law, the institutions that receive federal funds (i.e. Medicaid, Medicare, Food Stamps) must provide the services of a qualified interpreter to patients/clients who are not fluent in English. This law is meant to provide all people with equal access to public services (i.e. at hospitals and doctors' offices, schools, and government entities). The interpreter's services must be provided at no cost to the patient/client. We recommend that you note the person's spoken language in his/her file.

To learn more about language assistance, or the law, please call:

Culture Connect, Inc.
(404) 627-4793 culture connect
Office of Civil Rights (OCR)
(404) 562-7886

APPENDIX 2

**Georgia Department of Community Affairs – (DCA)
CDBG Applicant Concentration 2021 Data – County
*Language Spoken at Home By Ability to Speak English for the Population
5 years and over & American Community Survey (ACS) 2019.S1601
Estimates***

DBG Applicant Concentration 2021

CDBG Info

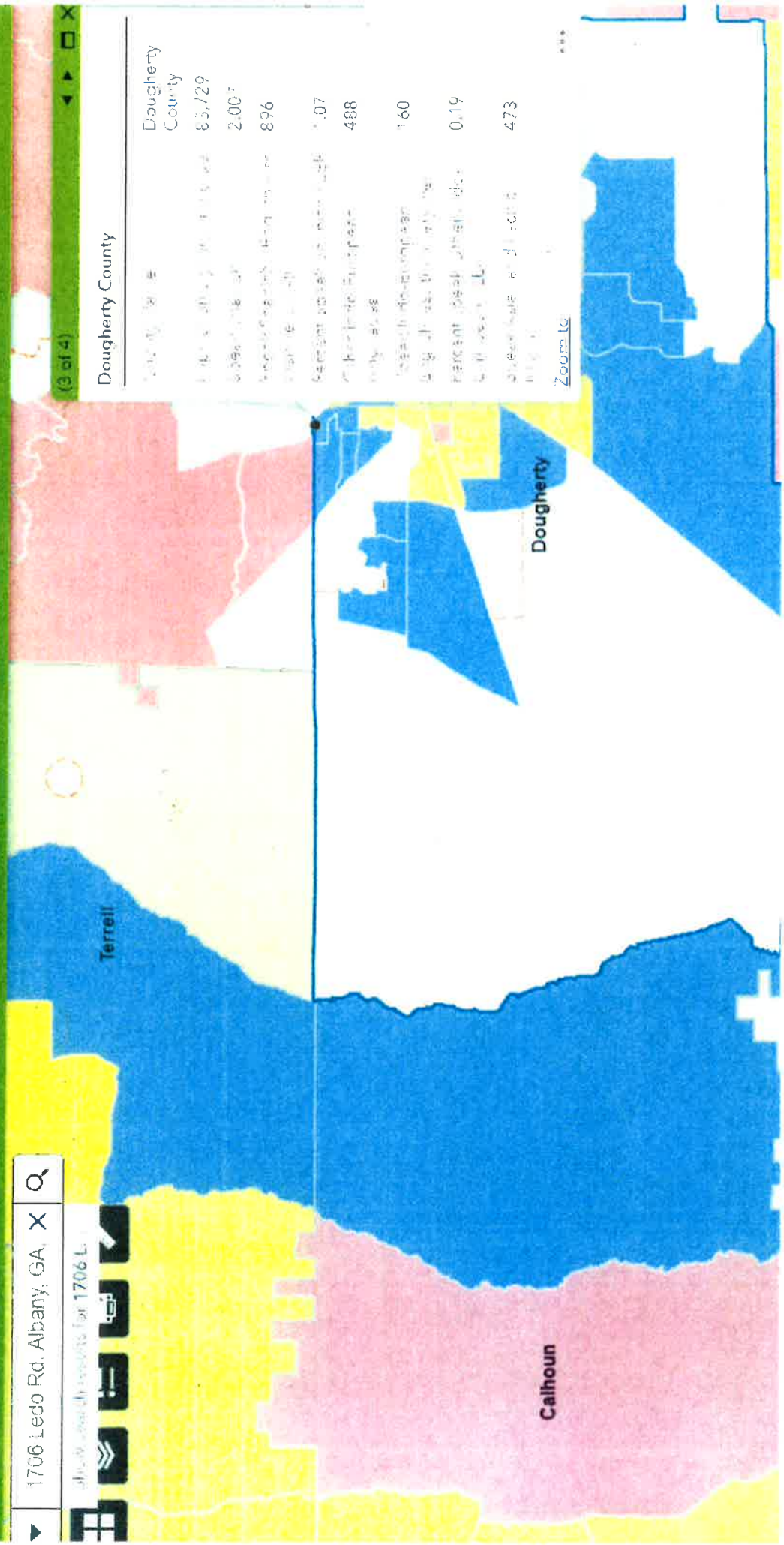
1706 Ledo Rd, Albany, GA, X Q

(3 of 4)

Dougherty County

County Name	Population	Area (sq mi)	Density (per sq mi)	Count	Percentage
Dougherty County	85,729	2,007	896	1,07	488
Calhoun County	160	0.19	473		

Zoom to



Item 4a.

American Community Survey (ACS) Estimates 2019

Table: ACSST5Y2019.S1601

Dougherty County, Georgia						
Label	Percent			Percent of specified language speakers		
	Estimate	Margin of Error	Estimate	Margin of Error	Estimate	Margin of Error
Total						
Population 5 years and over	83,729	±20	(X)	(X)	82,460	±237
Speak only English	80,509	±319	96.2%	±0.4	(X)	(X)
Speak a language other than English	3,220	±320	3.8%	±0.4	1,951	±271
SPEAK A LANGUAGE OTHER THAN ENGLISH						
Spanish	2,007	±237	2.4%	±0.3	1,111	±215
5 to 17 years old	487	±137	0.6%	±0.2	384	±132
18 to 64 years old	1,477	±183	1.8%	±0.2	684	±172
65 years old and over	43	±36	0.1%	±0.1	43	±36
Other Indo-European languages	488	±178	0.6%	±0.2	328	±108
5 to 17 years old	82	±72	0.1%	±0.1	82	±72
18 to 64 years old	337	±167	0.4%	±0.2	201	±84
65 years old and over	69	±49	0.1%	±0.1	45	±49
Asian and Pacific Island languages	473	±171	0.6%	±0.2	287	±125
5 to 17 years old	38	±43	0.0%	±0.1	18	±42
18 to 64 years old	386	±138	0.5%	±0.2	258	±116
65 years old and over	49	±52	0.1%	±0.1	11	±19
Other languages	252	±204	0.3%	±0.2	225	±176
5 to 17 years old	81	±104	0.1%	±0.1	81	±104
18 to 64 years old	166	±153	0.2%	±0.2	139	±115
65 years old and over	5	±9	0.0%	±0.1	5	±9
CITIZENS 18 YEARS AND OVER						
All citizens 18 years old and over	66,919	±212	(X)	(X)	66,473	±245
Speak only English	65,437	±297	97.8%	±0.4	(X)	(X)

DATE SOURCE: 2019. SOURCE: American Community Survey, 5-Year Summary Files

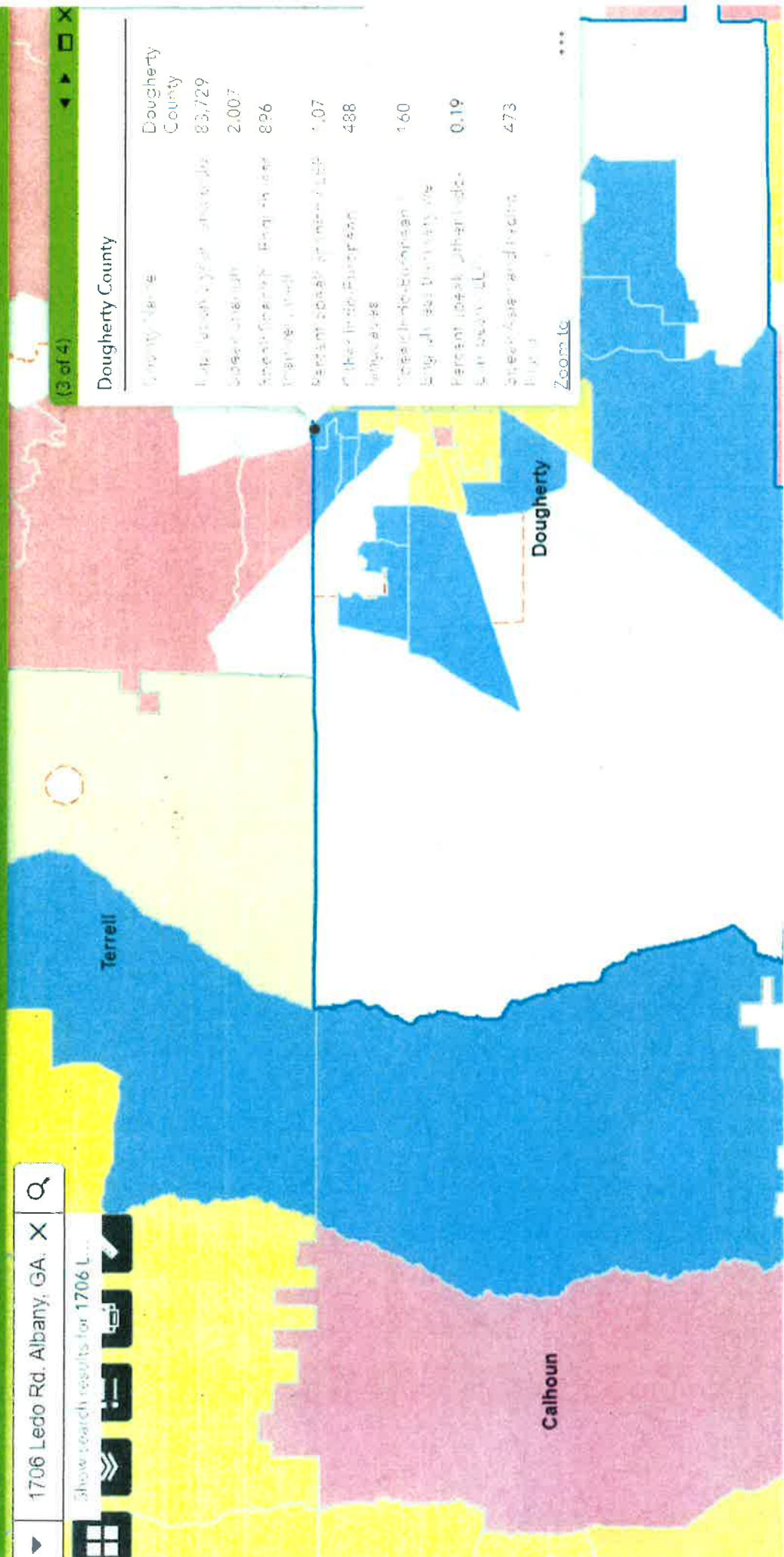
APPENDIX 3

**LAP Data Map
Target Area Map
LEP Activity Log Sheet**

LAP Data Map

1706 Ledo Rd. Albany, GA. X Q

Show search results for 1706 L...




Target Area Maps

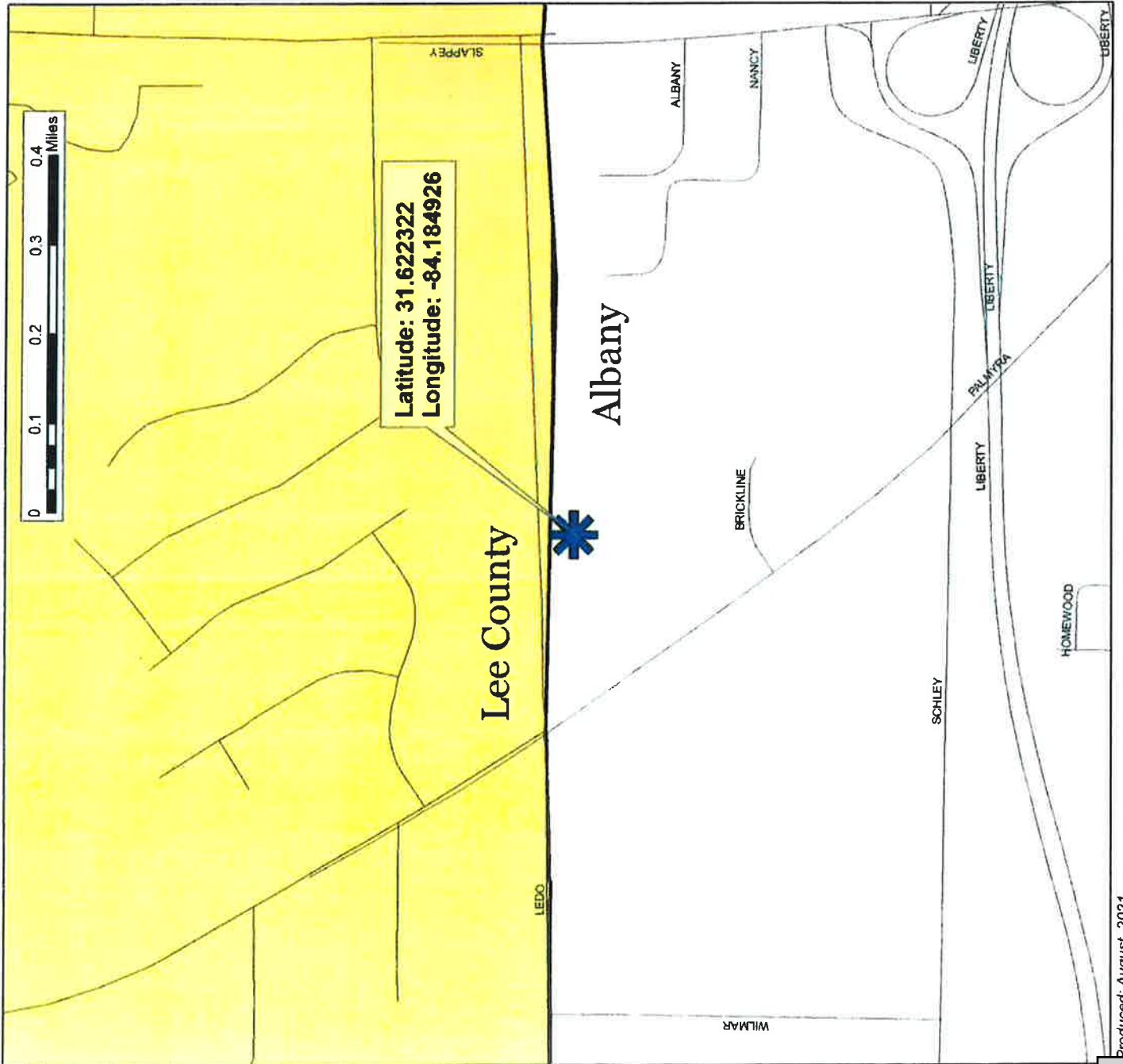
Dougherty County

Food Bank Expansion Project
Location Map



Legend

-  1706 Ledo Road
-  Albany City Limits






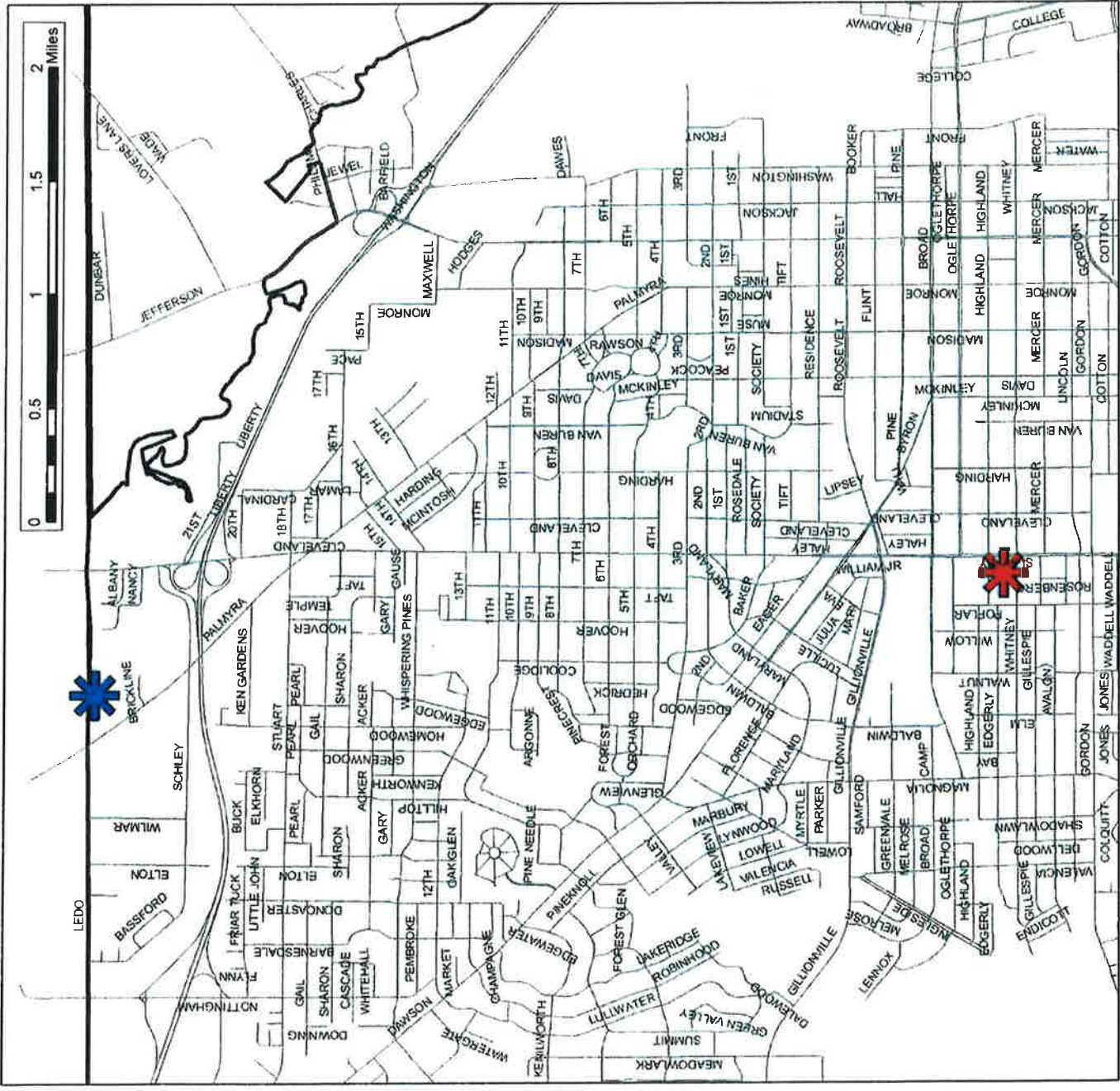


Dougherty County

Food Bank Expansion Project
Location Map

Legend

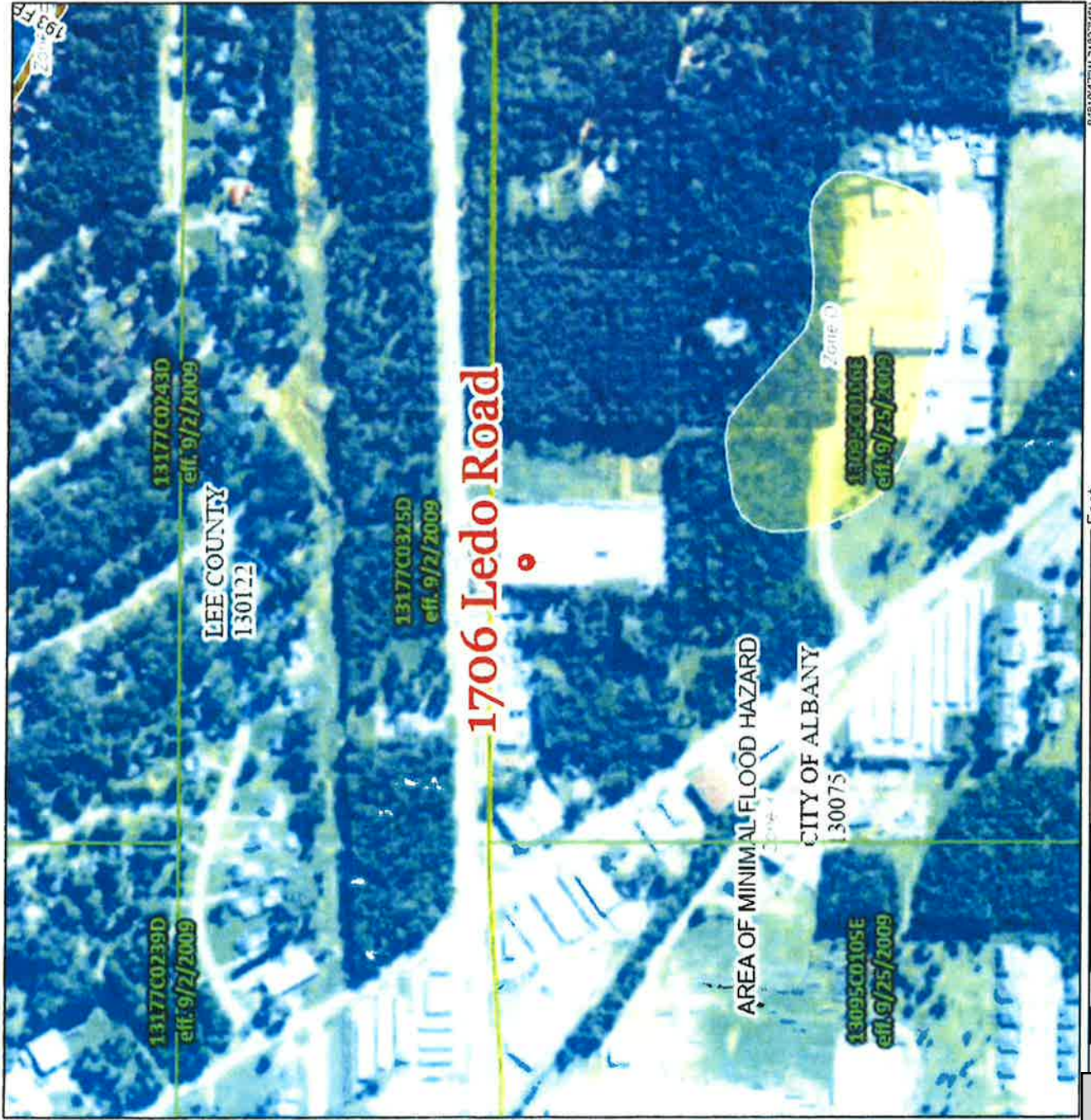
-  Proposed Location
-  Existing Location
-  Albany City Limits



Produced: August, 2021

National Flood Hazard Layer FIRMette

84°11'24"W 31°37'35"N



36

Feet 250 500 1,000 1,500 2,000 1:6,000

84°10'47"W 31°37'44"N

Basemap: USGS National Map; Orthoimagery: Data refreshed October, 2020

Legend

SEE FIS REPORT FOR DETAILED LEGEND AND INDEX MAP FOR FIRM PANEL LAYOUT

SPECIAL FLOOD HAZARD AREAS

- Without Base Flood Elevation (BFE)
Zone A, V, A99
- With BFE or Depth
Zone AE, AO, AH, VE, AR
- Regulatory Floodway

OTHER AREAS OF FLOOD HAZARD

- 0.2% Annual Chance Flood Hazard. Areas of 1% annual chance flood with average depth less than one foot or with drainage areas of less than one square mile Zone X
- Future Conditions 1% Annual Chance Flood Hazard Zone X
- Area with Reduced Flood Risk due to Levee. See Notes, Zone X
- Area with Flood Risk due to Levee Zone X

OTHER AREAS

- NO SCREEN
- Area of Minimal Flood Hazard Zone X
- Effective LOMRs
- Area of Undetermined Flood Hazard Zone X

GENERAL STRUCTURES

- Channel, Culvert, or Storm Sewer
- Levee, Dike, or Floodwall

OTHER FEATURES

- Cross Sections with 1% Annual Chance Water Surface Elevation
- Coastal Transect
- Base Flood Elevation Line (BFE)
- Limit of Study
- Jurisdiction Boundary
- Coastal Transect Baseline
- Profile Baseline
- Hydrographic Feature

MAP PANELS

- Digital Data Available
- No Digital Data Available
- Unmapped

The pin displayed on the map is an approximate point selected by the user and does not represent an authoritative property location.

This map complies with FEMA's standards for the use of digital flood maps if it is not void as described below. The basemap shown complies with FEMA's basemap accuracy standards.

The flood hazard information is derived directly from the authoritative NFHL web services provided by FEMA. This map was exported on 8/5/2021 at 10:20 AM and does not reflect changes or amendments subsequent to this date and time. The NFHL and effective information may change or become superseded by new data over time.

This map image is void if the one or more of the following map elements do not appear: basemap imagery, flood zone labels, legend, scale bar, map creation date, community identifiers, FIRM panel number, and FIRM effective date. Map images for unmapped and unmodernized areas cannot be used for regulatory purposes.

Item 4a.



U.S. Fish and Wildlife Service







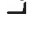
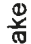
National Wetlands Inventory

1706 Ledo Road



August 5, 2021

Wetlands

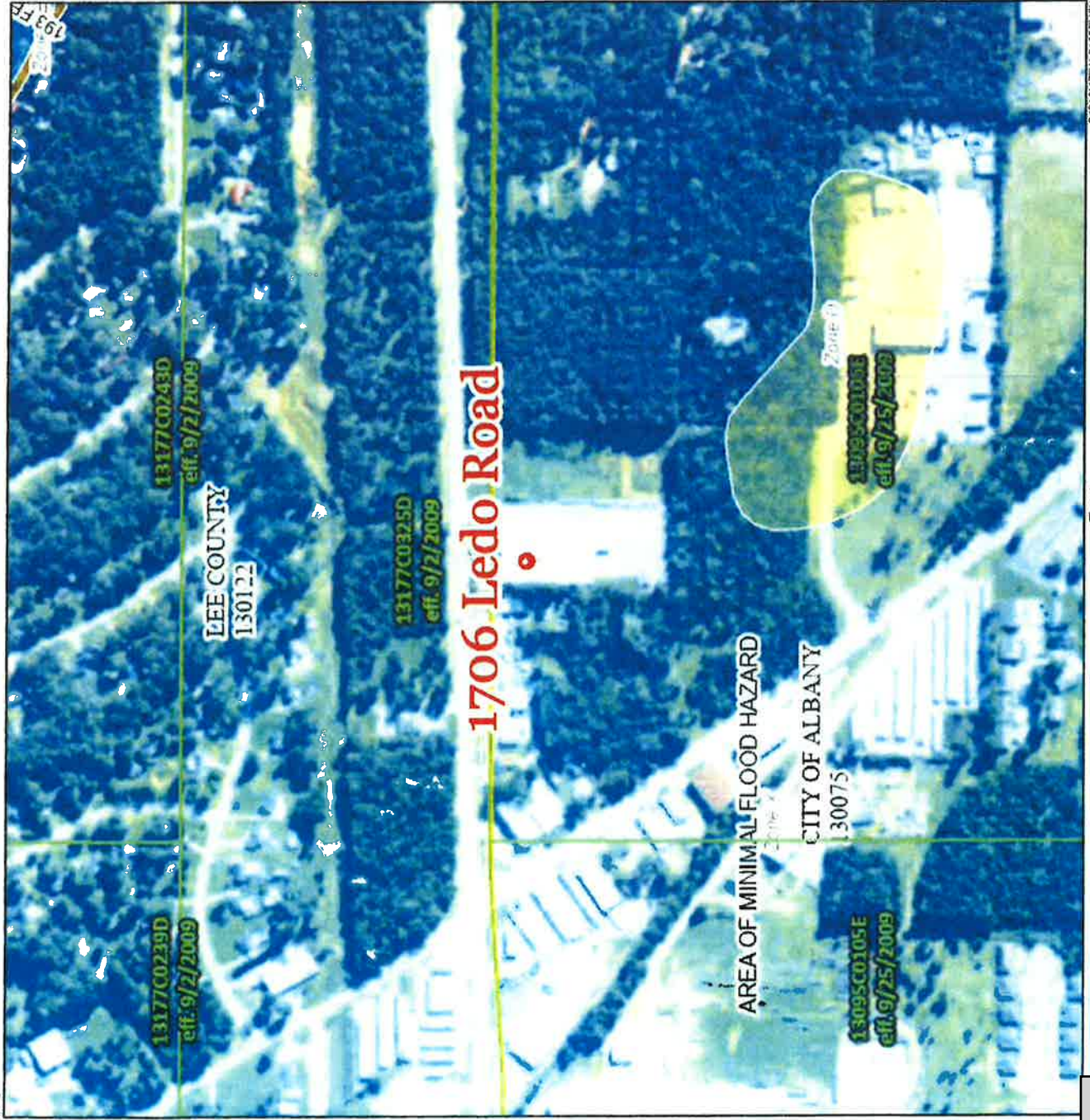
-  Estuarine and Marine Deepwater
-  Estuarine and Marine Wetland
-  Freshwater Emergent Wetland
-  Freshwater Forested/Shrub Wetland
-  Freshwater Pond
-  Lake
-  Other
-  Riverine

This map is for general reference only. The US Fish and Wildlife Service is not responsible for the accuracy or currentness of the base data shown on this map. All wetlands related data should be used in accordance with the layer metadata found on the Wetlands Mapper web site.

National Flood Hazard Layer FIRMette



84°11'24"W 31°03'35"N



Legend

SEE FIS REPORT FOR DETAILED LEGEND AND INDEX MAP FOR FIRM PANEL LAYOUT

	Without Base Flood Elevation (BFE) Zone A, V, A99
	With BFE or Depth Zone AE, AO, AH, VE, AR
	Regulatory Floodway
	0.2% Annual Chance Flood Hazard, Areas of 1% annual chance flood with average depth less than one foot or with drainage areas of less than one square mile Zone X
	Future Conditions 1% Annual Chance Flood Hazard Zone X
	Area with Reduced Flood Risk due to Levee. See Notes. Zone X
	Area with Flood Risk due to Levees Zone B
	NO SCREEN Area of Minimal Flood Hazard Zone X
	Effective LOMRs
	Area of Undetermined Flood Hazard Zone B
	Channel, Culvert, or Storm Sewer
	Levee, Dike, or Floodwall
	Cross Sections with 1% Annual Chance Water Surface Elevation
	Coastal Transact
	Base Flood Elevation Line (BFE)
	Limit of Study
	Jurisdiction Boundary
	Coastal Transact Baseline
	Profile Baseline
	Hydrographic Feature
	Digital Data Available
	No Digital Data Available
	Unmapped

The pin displayed on the map is an approximate point selected by the user and does not represent an authoritative property location.

This map complies with FEMA's standards for the use of digital flood maps if it is not void as described below. The basemap shown complies with FEMA's basemap accuracy standards.

The flood hazard information is derived directly from the authoritative NFHL web services provided by FEMA. This map was exported on 8/5/2021 at 10:20 AM and does not reflect changes or amendments subsequent to this date and time. The NFHL and effective information may change or become superseded by new data over time.

This map image is void if the one or more of the following map elements do not appear: basemap imagery, flood zone labels, legend, scale bar, map creation date, community identifiers, FIRM panel number, and FIRM effective date. Map images for unmapped and unmodernized areas cannot be used for regulatory purposes.

Item 4a.

Special Condition #2
Continued Use of Facility Resolution

RESOLUTION

DOUGHERTY COUNTY BOARD OF COMMISSIONERS

CONTINUED USE OF FACILITY

FOR

COMMUNITY DEVELOPMENT BLOCK GRANT CORONAVIRUS (CDBG-CV) PROJECT

WHEREAS, Dougherty County Board of Commissioners has been awarded a Community Development Block Grant-Coronavirus (CDBG-CV) project number: 21cv-y-047-1-6241 from the State of Georgia Department of Community Affairs (DCA) Office of Community and Development and,

WHEREAS, Dougherty County Board of Commissioners will serve as the grant’s applicant/recipient for the CDBG-CV application to expand the building located at 1706 Ledo Road in Albany, Georgia 31707 and Feeding the Valley Food Bank will serve as the subrecipient. The building will be renovated and used as a food bank facility as stated in the attached letter from Feeding the Valley Food Bank.

WHEREAS, Dougherty County Board of Commissioners certifies they have read and agree to the following Continued Use of Facilities statement:

"DCA expects facilities constructed or improved in whole or in part with CDBG funds are to be used for the approved use throughout the life of the facility. DCA should be contacted immediately if there is a proposed change in use or beneficiaries. Prior to DCA consideration of the request, the local government must hold a public hearing to afford affected citizens an opportunity to comment on the proposed change. DCA will determine if in fact the new use is an eligible and appropriate activity. DCA will generally require, and the Recipient agrees to the repayment of grant funds to the State if the facility is converted to an ineligible use as determined by DCA. The repayment will be based on 10-year straight-line depreciation, except 100% repayment of grant funds will be required to be repaid during the first 5 years after the grant closeout date. Local governments that violate the agreement and fail to respond to a DCA finding with regard to an inappropriate change of use of a facility will be sanctioned and face penalties up to and including loss of their CDBG eligibility. Such uses include any leases or subleases of the facility."

BE IT FURTHER THEREFORE RESOLVED, Dougherty County Board of Commissioners and Feeding the Valley Food Bank will comply with the continued of use policy for this CDBG-CV grant that will benefit low-to-moderate income residents in Dougherty and surrounding counties served by Feeding the Valley Food Bank.

Adopted this _____ day of _____ 2022.

Christopher S. Cohilas, Chairman
Dougherty County Board of Commissioners

ATTEST:

Jawahn E. Ware, County Clerk
Dougherty County Board of Commissioners



6744 Flat Rock Rd. Midland, GA 31820
Post Office Box 8904 Columbus, GA 31808
706-561-4755
www.feedingthevalley.org

October 6, 2021

To Whom It May Concern:

Feeding the Valley Food Bank (FTV) understands that the CDBG-CV grant opportunity being offered through the Department of Community Affairs (DCA) has a Continuation of Use clause. This requires the property in question at 1706 Ledo Road, Albany, GA 31707 to be used as a food bank for the “foreseeable future”, a period of at least ten years.

FTV has purchased this facility to be the permanent home of FTV-Albany. Its size, at 35,000 square feet plus 5,000 square feet of cold storage space being added adjacent to the warehouse facility is all the capacity needed to fully serve the Albany community and the four counties of Calhoun, Dougherty, Lee and Terrell.

This facility provides food assistance in the form of several programs:

Agency Distribution – A network of 90 partner agencies, typically churches and other nonprofit organizations acquire food from FTV to distribute at their facility or in their local neighborhood.

Mobile Pantry – Volunteers pack boxes of food commodities to take to ten different sites each month to distribute to families in need who do not have the resources to get to a partner agency. Each family receives 60 pounds of food to include frozen lean meats, fresh produce, boxed/canned goods and dairy items.

Kids Café – Our children’s feeding program provides daily meals at sites throughout the area.

Weekend Backpack Program – This program, titled “BuddyPack” provides chronically-hungry children with a pack of ten kid-friendly but nutritious items to take home each Friday to have nutritional sustenance over the weekend.

FTV’s Albany site is open the following hours:

Monday through Thursday – 7:00 a.m. to 3:00 p.m.

Friday, Saturday and Sunday – Distributions done in the community or closed.

Sincerely,

Frank Sheppard
President & CEO
Feeding the Valley Food Bank



Serving Calhoun, Chattahoochee, Clay, Dougherty, Harris, Lee, Marion, Meriwether, Muscogee, Quitman, Randolph, Schley, Stewart, Talbot, Terrell, Troup and Webster Counties in Georgia and Russell County in Alabama

Special Condition #3
Final Design and Floor Plan
&
Approved by All Service Agencies



Christopher Cohilas,
Ed Newsome, *District 1*
Victor Edwards, *Vice Chairman, District 2*
Clinton Johnson, *District 3*
Russell Gray, *District 4*
Gloria Gaines, *District 5*
Anthony Jones, *District 6*

**DOUGHERTY COUNTY BOARD OF COMMISSIONERS
ADMINISTRATION**

Michael McCoy, *County Administrator*
W. Spencer Lee, IV, *County Attorney*

February 23, 2022

Ms. Kimberly N. Carter, EDFP
Division Director, Community Finance Division
Georgia Department of Community Affairs
60 Executive Park South, NE
Atlanta, GA 30329

RE: Dougherty County Board of Commissioners
Community Development Block Grant - Coronavirus (CDBG-CV) Food Bank Expansion Project
CDBG-CV Project Number: 21cv-y-047-1-6241

Dear Ms. Carter:

Dougherty County Board of Commissioners have received a detailed space analysis/floor plan for the food bank expansion project located on 1706 Ledo Road Albany, Georgia. Attached is a copy of the final floor plan design and the design was prepared by the Architectural Firm-Quality Refrigerated Engineering and Construction.

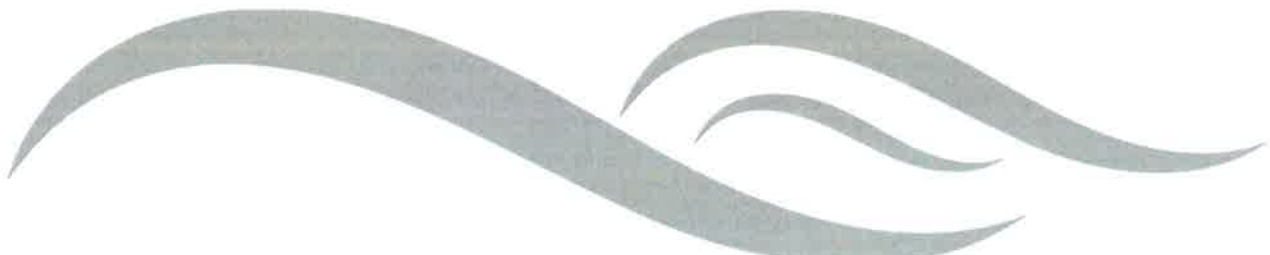
All service agencies include Dougherty County, Feeding the Valley (FTV) Food Bank and Albany-Dougherty Payroll Development Authority have approved the final floor plan.

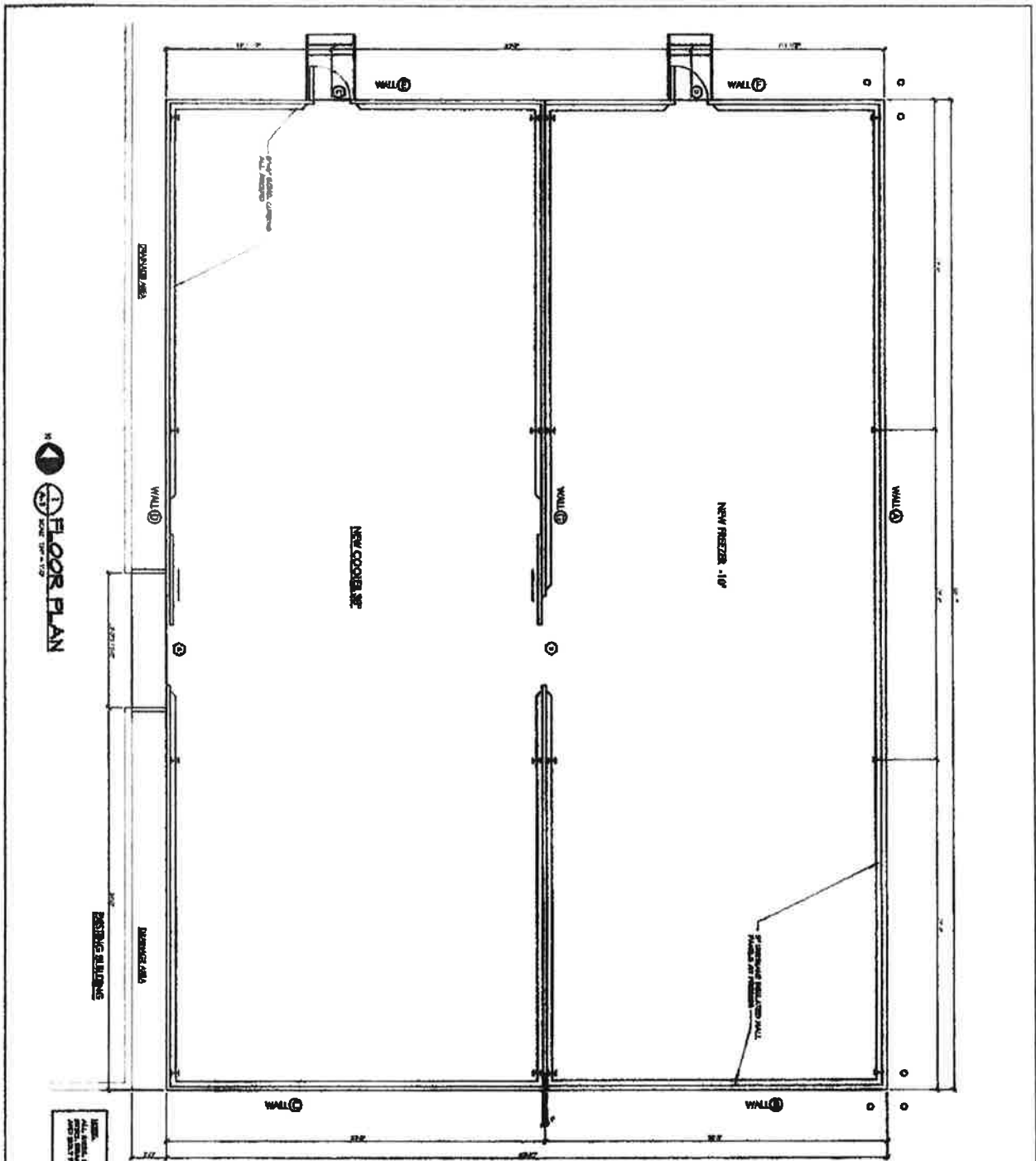
If you have any questions, regarding this information, please feel free to contact me or Mr. Michael McCoy, County Administrator at (229) 431-2121.

Sincerely,

Christopher S. Cohilas
Chairman

Enclosures





Component Schedule

ITEM	Description	Approximate Quantity
1	Concrete	10,000 cu yds
2	Rebar	100,000 lbs
3	Formwork	10,000 sq ft

WALL CONSTRUCTION SPECIFICATIONS

The wall and ceiling construction is to be shown in general, including general notes, and notes for the following items:

1. Formwork: 1) Use formwork system, and include system notes.
2. Reinforcement: 1) Reinforce with #4 rebar, spaced at 18" on center.
3. Wall thickness: 1) Wall thickness shall be 12" for all walls.
4. Wall construction: 1) Wall construction shall be in accordance with the specifications for concrete and masonry.

EXTENSION WALL CONSTRUCTION

ITEM	Description	Quantity
1	Concrete	10,000 cu yds
2	Rebar	100,000 lbs
3	Formwork	10,000 sq ft

1. On partial section, panel construction uses heavy-duty, industrial-grade steel and steel reinforcement for long spans and heavy loads. The construction is to be shown in general, including general notes, and notes for the following items:
2. On full section, panel construction uses heavy-duty, industrial-grade steel and steel reinforcement for long spans and heavy loads. The construction is to be shown in general, including general notes, and notes for the following items:
3. On full section, panel construction uses heavy-duty, industrial-grade steel and steel reinforcement for long spans and heavy loads. The construction is to be shown in general, including general notes, and notes for the following items:
4. On full section, panel construction uses heavy-duty, industrial-grade steel and steel reinforcement for long spans and heavy loads. The construction is to be shown in general, including general notes, and notes for the following items:

FEEDING THE VALLEY

FOR THE

VALLEY

CONSTRUCTION COMPANY

1234567890

PROFESSIONAL ARCHITECTURAL

ARCHITECTURE, INC.

1234567890

1234567890

1234567890

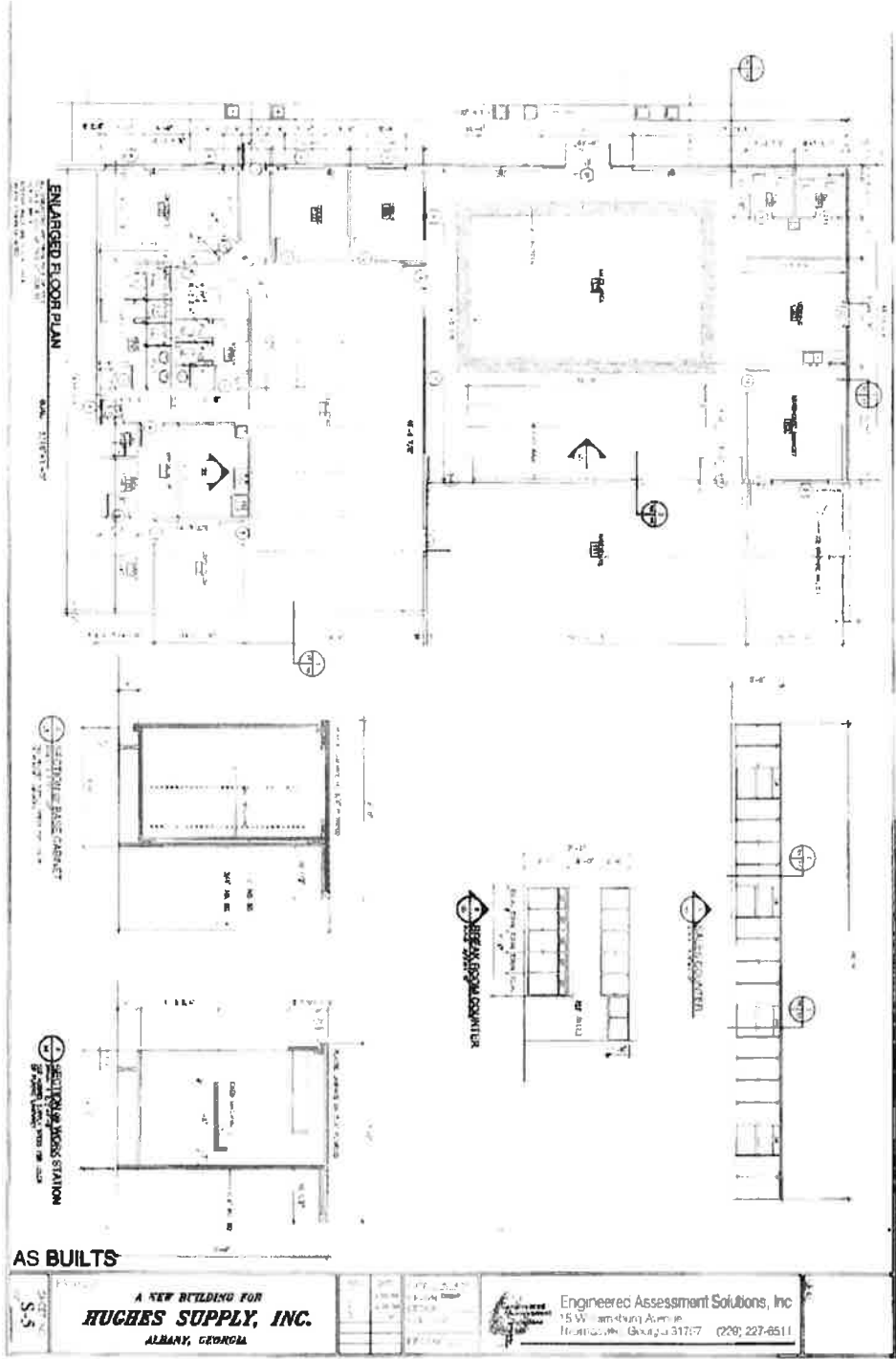
FLOOR PLAN

Scale: 1/4" = 1'-0"

DATE: 12/15/2020

BY: [Signature]

A-1



A NEW BUILDING FOR
HUGHES SUPPLY, INC.
ALBANY, GEORGIA

Engineered Assessment Solutions, Inc.
15 W. Armstrong Avenue
Trenton, Georgia 31717 (228) 227-6511

